



CINEFILE

Product Profile

Issue 3

© 2006 AMS Neve Ltd own the copyright of all information and drawings contained in this manual which are not to be copied or reproduced by any means or disclosed in part or whole to any third party without written permission.

As part of our policy of continual product improvement, we reserve the right to alter specifications without notice but with due regard to all current legislation.

Disclaimer: The information in this manual has been carefully checked and is believed to be accurate at the time of publication. However, no responsibility is taken by us for inaccuracies, errors or omissions nor any liability assumed for any loss or damage resulting either directly or indirectly from use of the information contained within it.

HEAD OFFICE

AMS NEVE PLC • BILLINGTON ROAD • BURNLEY
LANCS BB11 5UB • ENGLAND
TELEPHONE: +44 (0) 1282 457011 • FAX: +44 (0) 1282 417282

LONDON OFFICE

TELEPHONE: +44 (0) 20 7916 2828 • FAX: +44 (0) 20 7916 2827

NORTH AMERICAN OFFICES

AMS NEVE INC., NEW YORK
TEL: +1 (212) 965 1400 • FAX: +1 (212) 965 9306
AMS NEVE INC., HOLLYWOOD
TEL: +1 (818) 753 8789 • FAX: +1 (818) 623 4839

e-mail: enquiry@ams-neve.com
<http://www.ams-neve.com>



Product Profile Contents

	Page Number
1. Introduction	2
2. Virtual Machines	3
3. Recording	3
4. Playback	4
5. 384 Track Systems	4
6. File Formats	4
7. Workflow	5
7. Storage	6
8. Synchronisation	6
9. Machine Control	6
10. Control Interface	7
11. I/O Connections	8
12. Specifications	8

INTRODUCTION

CineFile is a robust, purpose built, expandable dubber / recorder designed for the next generation of workflow inspired mixing theatre. CineFile offers a unique combination of high sound quality, efficient media management, simple scalability and cutting edge performance. Systems can be expanded by slave CineFile units being daisy-chained from the Master CineFile giving a very wide sync-locked dubber with only a single host computer. Multiple formats are supported as native including AAF, OMF, Pro Tools Session 5 compatible, AudioFile Project or Akai format.



VIRTUAL MACHINES

CineFile can be configured as a series of **virtual machines**. For example tracks 1-8 and 9-16 can be configured as a pair of 8-track recorders, Tracks 17-40 as a 24 track recorder and so on. These allow the mixer to work easily with the multiple formats which often appear at the mix stage. They can be used for multiple stems such as a 3 wide dialogue stem, 8 wide FX stem, 6 wide music stem, etc. This flexible configuration extends to file formats and remote control.

RECORDING

CineFile records broadcast wave files (.bwf). "Virtual recorders" can be dropped in and out of record



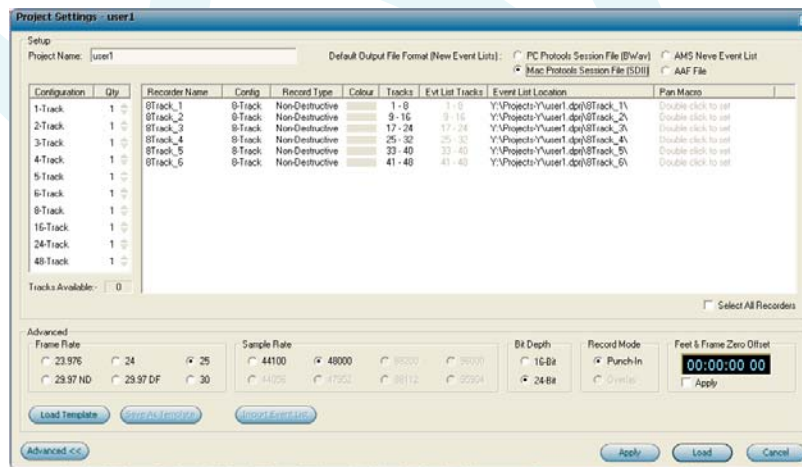
seamlessly via the 9-pin machine control port. Record trails are updated on the CineFile track display in real time. A unique feature of the versatile file format management is that CineFile can record directly in ProTools Session 5.0 Compatible format, AAF format and other formats simultaneously. This has the key benefit of removing any need to export to these formats after the session - the files are available immediately in the desired format.

Simultaneous Recording to Two Drives.

With the optional RAID card recordings can be made simultaneously to two drives. These can be local SCSI drives or network drives. This redundancy provides great security and also aids work flow, one drive can be removed and placed on an editor while recording carries on to the second drive.

PLAYBACK

A single CineFile can playback up to 96 tracks at 48kHz or 48 tracks at 96kHz with two SC/X cards fitted. A single card CineFile can playback to 48 tracks at 48kHz or 24 tracks at 96kHz. The system can playback directly from ProTools Session 5.0, OMF, AAF files, Akai files and AMS Neve projects. This includes simultaneous playback of multiple formats.



384 TRACK SYSTEMS

Each CineFile unit can accommodate up to 96 tracks, if more than 96 tracks are required then slave CineFile units can be added to the master unit via Firewire connection. Each slave unit gives a possible 96 additional tracks. A maximum of 384 tracks is possible from a single system.

FILE FORMATS

CineFile records directly to broadcast wave files with a choice of project formats. A unique feature is the ability to record and play back multi-format projects. A mixture of AAF, OMF, ProTools Session 5 compatible, Akai format and AMS Neve Project files can be opened and played out simultaneously.

The illustration shows the track playback configuration set to:-

Tracks	Settings
1-8	ProTools 5.0 Session
9-16	AMS Neve Project events list
17-27	8 track OMF file
24-48	24 track AAF file

Individual audio files are recorded as .bwf Broadcast Wav files. The operator sets the required record project format from a choice of:

- AMS Neve Project
- AAF
- Pro Tools Session 5.0 Compatible
- OMF
- Akai

In addition to the support for these native record and playback formats, CineFile can Import and Export OpenTL and EAS31 formats.

WORKFLOW

CineFile gives seamless bi-directional workflow with MAC and PC versions of ProTools. This allows you to record in Pro Tools format on the CineFile, open the session in Pro Tools on a Mac or PC network, edit the recording and re-open the edited version in CineFile.

Of course this seamless transfer of files can also be with networked picture systems using AAF or OMF, and CineFile can also run on a StarNet AudioFile workstations network. A total network solution for efficient workflow

STORAGE

A range of drive options are available designed to meet all possible requirements and ensure an efficient and secure work flow. A variety of drive types may be mounted and used simultaneously.

The CineFile master unit includes two Wide SCSI removable drive housings which can be used for high bandwidth performance. Additional SCSI drives can be connected externally if required.

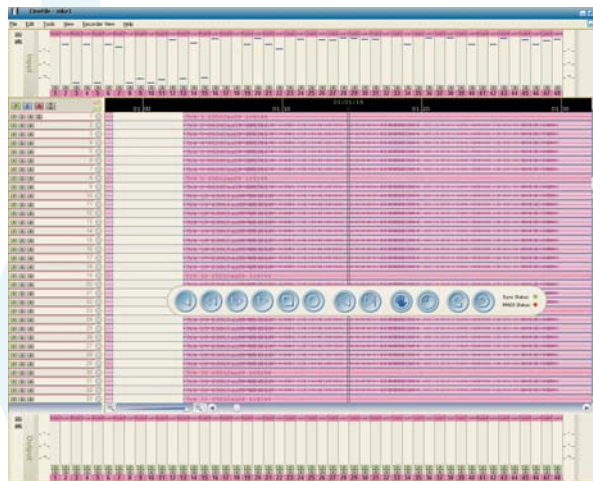
Built-in Firewire gives users the ability to connect Firewire drives for maximum flexibility.

CineFile can be connected to a network and is fully compatible with AMS Neve StarNet networking. Recording and playback can be to or from remote drives on a storage Area Network.

SYNCHRONISATION

CineFile can be synchronised to Word Clock, MADI Word Clock, AES Clock, Video Sync (Black Burst) or Tri Sync.

Frame rates supported include 24fps, 25 fps, 29.97 fps Drop and Non-Drop and 23.976 fps. Pull Up and



Pull Down is supported between all standard frame rates.

CineFile runs at 44.1kHz, 48kHz, and 96kHz sample rates and supports variable sample rates for pull up and pull down operation.

MACHINE CONTROL

A Sony 9-pin machine port is fitted to CineFile allowing it to be controlled as a non-linear slave machine from either an AMS Neve console or a 3rd party machine synchronizer. Remote arm may be performed from the console surface or machine synchroniser.

CineFile also features a built-in LTC reader allowing the system to be configured to run as an LTC slave for

CONTROL INTERFACE

CineFile can be controlled from the screen based user interface.



This display can be configured to show groups of tracks (for example tracks 1-8, 17-24 etc). The display also shows the status of each track (rec / repro / ready) and metering for each track. From the screen the user has access to transport control, track arming, jog & shuttle, locate and so on.

When integrated with an AMS Neve console, CineFile is controlled via transport controls on the console surface. This controls playback and record modes. Arming is controlled by the PEC / DIRECT panel of the console.

CineFile can also be connected to any 3rd party console via Sony 9-pin and LTC. The track playback and control interface is displayed on a standard VGA display.

I/O CONNECTIONS

CineFile includes MAD1 ports for direct connection to MAD1 based consoles. One pair of MAD1 connectors are fitted to a single SC/X card CineFile, two pairs to a dual SC/X card system. BNC MAD1 connectors are provided as standard with an option for optical connectors. Each pair of MAD1 connectors supports 48 inputs and 48 outputs on the CineFile unit. The MAD1 based console may be using 56 or 64 channel MAD1 standards.

A variety of I/O boxes are available from AMS Neve to provide AES or Analogue I/O if required.

SPECIFICATIONS



CineFile comprises a single 4U high 19" box which houses a high performance embedded Pentium 4 processor and dedicated AMS Neve hardware. The operating system is Windows XP. CineFile can be easily configured and controlled via a standard PC mouse, keyboard and VGA monitor.

Specification	Standard Unit	Options
Physical	4U 19" rack mount	
Playback capability	48tr @ 48kHz / 24tr @ 96kHz	96tr @ 48kHz
Record capability	48tr @ 48kHz / 24tr @ 96kHz	96tr @ 48kHz
SC/X Cards	Single SC/X card	Dual SC/X cards
Punch-in capability	Punch-in/out across 48 tracks	Punch-in/out across 96 tracks
Scrubbing capability	Forwards / reverse scrub	
MADI I/O	48 MADI I/O	96 MADI I/O
MADI connection	BNC in/out	Optical in/out
AES I/O		48 I/O per AES rack
Analogue I/O		48 I/O per MIOS rack
Synchronisation	Wordclock, MADI Wordclock, AES, Video Synch/Black Burst, Tri Synch	
Frame Rates	24, 25, 29.97 Drop, 29.97 Non-Drop, 23.976	
Sample Rates	41.1kHz 48kHz, 96kHz, and associated pull up/down frequencies	
Machine Control	VTR Slave / LTC chase	
Control Interface	VTR emulation	
Track Arming	Screen, PEC panel or 9-pin	
Audio Formats	.bwf, AIFF, wav, AudioFile	
Project Interchange	AAF, OMF1, OMF2, AES31, ProTools 5.0 compatible, AKAI*, OpenTL	
Playback Media Support	Firewire, SCSI320/160, SATA, SAN	
Operating System	Windows XP	
Network Support	AMS Neve StarNet / Ethernet	
Edit Support	Event slip on track / change track, cut & paste editing.	
Multi-Unit Cascading	Via Firewire & LVD SCSI	

* Not available in version 1 software

© Jan 2006 AMS Neve plc own the copyright of all information and illustrations contained in this document which are not to be copied or reproduced by any means or disclosed in part or whole to any third party without written permission. As part of our policy of continual product improvement, we reserve the right to alter specifications without notice but with due regard to all current legislation. Disclaimer: The information in this document has been carefully checked and is believed to be accurate at the time of publication. However, no responsibility is taken by us for inaccuracies, errors or omissions nor any liability assumed for any loss or damage resulting either directly or indirectly from use of the information contained within it.



CINEFILE

dedicated digital dubbing for the 21st century

CINEFILE

AMS Neve Ltd - Billington Road - Burnley - Lancs - England - BB11 5UB Phone: +44 (0) 1282 417281

Email: info@ams-neve.com Web: <http://www.ams-neve.com>

London: +44 (0) 20 7916 2828 Germany: +49 61 31 942 5220 New York: +1 (212) 965 1400 Hollywood: +1 (818) 753 8789