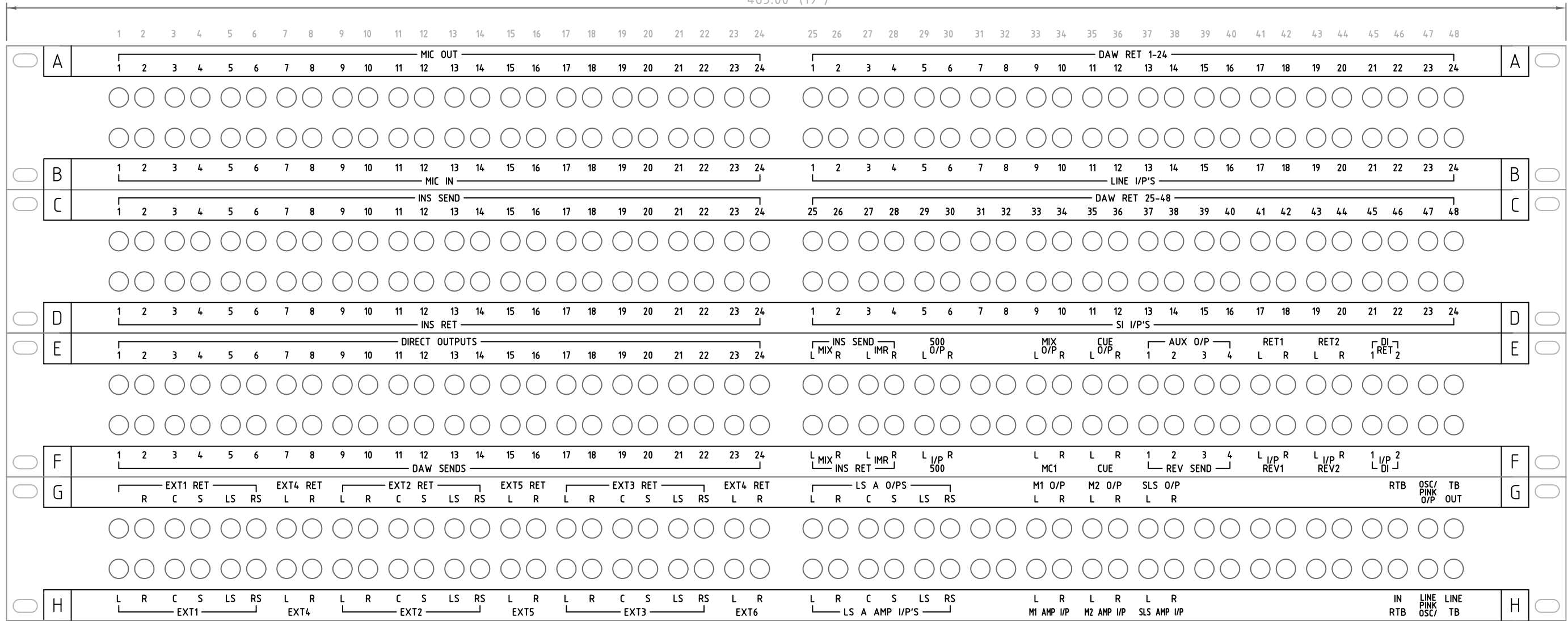


483.00 (19")

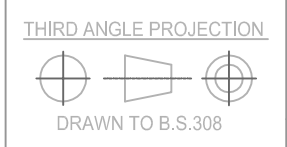
44.50 (1.75")



NOTE

- ① RTB MIC, OSC/PINK & TB OUT CAN BE WIRED ON A SPECIAL D SUB CABLE FROM THE CONSOLE 15D SUB SERVICE CONNECTOR IF REQUIRED ON THE PATCH.

SMW	PROTO.	28.7.15	1
NAME	MOD. No.	DATE	ISS.



AMS NEVE LTD. owns the copyright to this drawing. It must not be copied in whole or in part, used for manufacture or otherwise disclosed without prior written consent of the company.
©AMS NEVE LTD.

TITLE: NEVE BCM10 MK2 CONSOLE
(24 CHANNEL VERSION)
PROPOSED PATCH LAYOUT

DRAWN	APP'D	DATE
SMW		28.7.15

AMS NEVE LTD. BILLINGTON ROAD, BURNLEY, LANCS. BB11 5UB, ENGLAND.
TEL: +44 (0)1282 457011 FAX: +44 (0)1282 417282.
WEBSITE: www.ams-neve.com

DRG No.	SHT
ML20706	3